



jordan fishwick

Martlet Avenue Disley Stockport



**Martlet Avenue Disley Stockport
SK12 2JH**

Guide Price £625,000



The Property

A superb position within one of the most sought after areas within Disley, a stunning, extended, split level, four double bedroom detached home. Ideal for many buyers and incorporating a contemporary 32ft open plan living dining kitchen. Plenty of driveway parking, an integral double garage and enclosed private gardens with artificial lawn offering easy maintenance. Well presented throughout, pvc double glazing and gas central heating. Comprising: entrance porch, hall with cloaks cupboard, wc, study, 21ft x 18ft living dining room, fitted kitchen with Granite tops, four bedrooms (smallest 11'10 x 10'1) and a family bathroom with jacuzzi bath. Viewing highly recommended.



- Extended Detached Home
- Four DOUBLE Bedrooms
- Superb 32FT Living Dining Kitchen
- Well Presented Throughout
- Sought After Location
- Ample Driveway Parking
- Integral Double Garage
- Private Gardens With Artificial Lawn
- 17FT Master Bedroom
- Home Office

Postcode SK12 2JH
 EPC Rating
 Local Authority Cheshire East
 Council Tax F

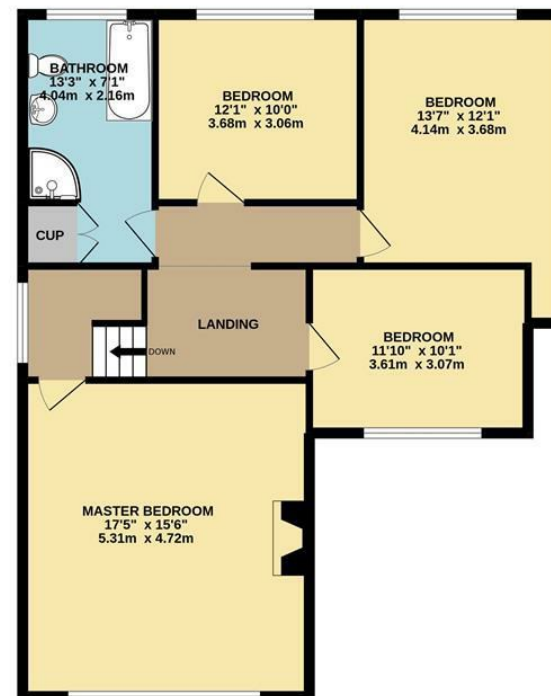
Energy Efficiency Rating		
	Current	Potential
Very energy efficient - lower running costs		
(92 plus) A		
(81-91) B		
(69-80) C		
(55-68) D		
(39-54) E		
(21-38) F		
(1-20) G		
Not energy efficient - higher running costs		
England & Wales	EU Directive 2002/91/EC 	



GROUND FLOOR



1ST FLOOR



Whilst every attempt has been made to ensure the accuracy of the floorplan contained here, measurements of doors, windows, rooms and any other items are approximate and no responsibility is taken for any error, omission or mis-statement. This plan is for illustrative purposes only and should be used as such by any prospective purchaser. The services, systems and appliances shown have not been tested and no guarantee as to their operability or efficiency can be given.
Made with Metropix ©2022



These particulars are believed to be accurate but they are not guaranteed and do not form a contract. Neither Jordan Fishwick nor the vendor or lessor accept any responsibility in respect of these particulars, which are not intended to be statements or representations of fact and any intending purchaser or lessee must satisfy himself by inspection or otherwise as to the correctness of each of the statements contained in these particulars. Any floorplans on this brochure are for illustrative purposes only and are not necessarily to scale.

Offices at: Chorlton, Didsbury, Disley, Hale, Glossop, Macclesfield, Manchester Deansgate, Manchester Whitworth Street, New Mills, Sale, Wilmslow and Withington

14 Market Street, Disley, Cheshire, SK12 2AA

01663 76 78 78

disley@jordanfishwick.co.uk

www.jordanfishwick.co.uk